

## PLUGS – HIGH PRESSURE *SPECIFICATIONS*

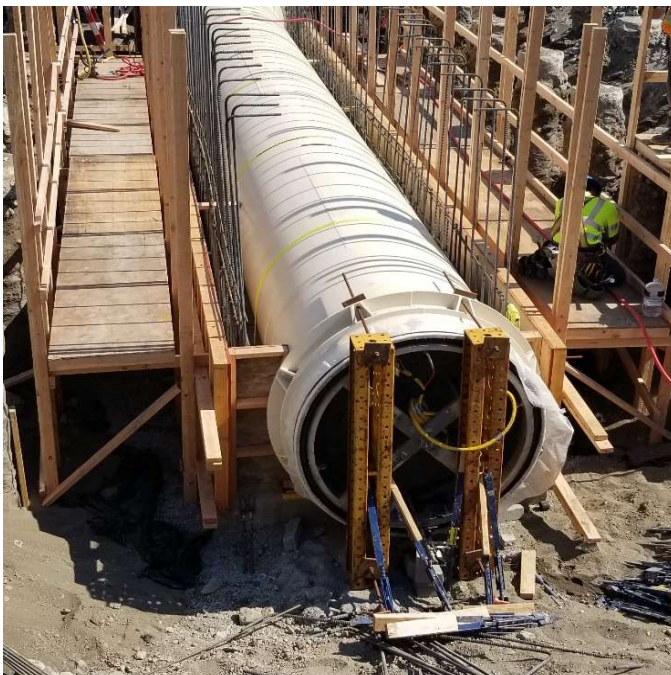
Stemar high pressure plugs are designed to seal the host pipe to pressure up to 150 PSI (custom models up to 300 PSI\*) when properly braced. These plugs are equipped with a centered bypass pipe for introducing your test medium into the pipe. Larger sizes include a second offset bypass for monitoring pressure and/or bleeding air out of the section being tested.

All Stemar high pressure plugs are proudly made in the USA with high quality steel, natural rubber, and synthetic cording reinforcement.



Common applications for Stemar high pressure plugs include use in water mains, force mains, and any other hydrostatically tested industrial line. Whether during new construction or rehabilitation of desalination plants, wastewater treatment plants, and more \*Stemar high pressure test plugs can be custom manufactured to meet the requirements of your job.

High pressure plugs are also commonly used in lower pressure applications where a long length of pipe is not available



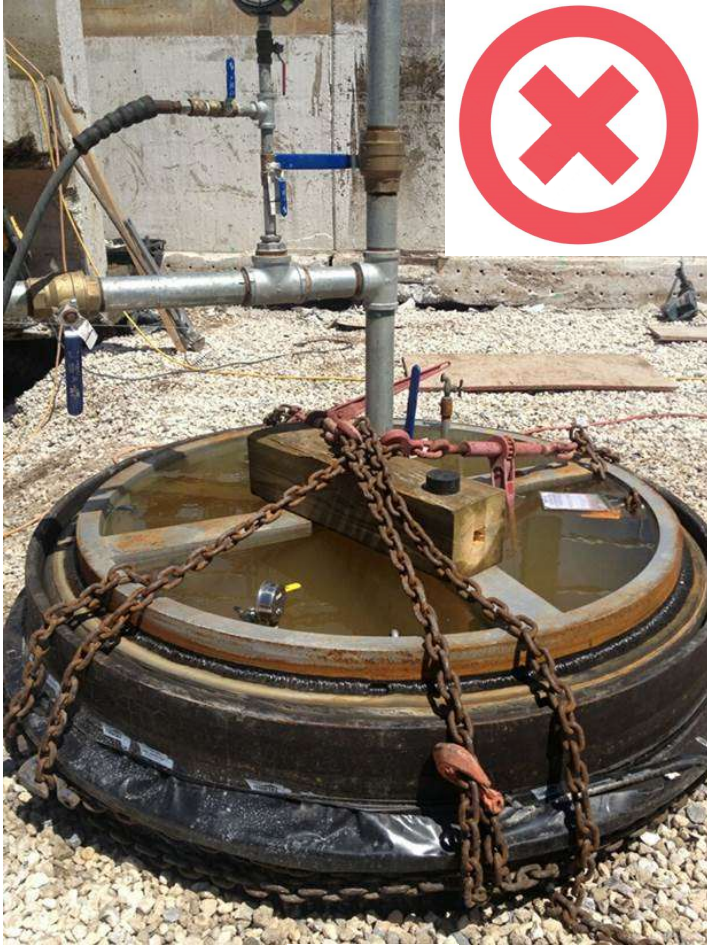
## HIGH PRESSURE PLUGS

Plug Size	Stemar RC#	Mfg. Code	Usage Range (Pipe ID)	Inflation Pressure	Maximum Back Pressure	Product Weight	Deflated Length	Deflated Diameter	BYPASS SIZE
3"	2600	L	2.80" – 3.25"	225 PSI	150 PSI	8 LBS	12"	2.75"	3/4"
4"	2610	L	3.80" – 4.25"	225 PSI	150 PSI	10 LBS	12"	3.50"	3/4"
4"-8"	2641	C	3.80" – 8.20"	200 PSI	150 PSI	8 LBS	16"	3.80"	3/8"
6"	2611	L	5.50" – 6.25"	225 PSI	150 PSI	15 LBS	12"	5.00"	3/4"
8"	2612	L	7.00" – 8.25"	225 PSI	150 PSI	20 LBS	12"	6.00"	2"
8"-12"	2642	C	7.70" – 12.20"	200 PSI	150 PSI	24 LBS	24"	7.70"	3/4" OR 1.5"
10"	2613	L	9.00" – 10.25"	225 PSI	150 PSI	28 LBS	12"	8.00"	2" CENTER & 3/4" OFFSET
12"	2614	L	11.00" – 12.25"	225 PSI	150 PSI	37 LBS	12"	10.00"	2" CENTER & 3/4" OFFSET
12"-16"	2643	C	11.90" – 16.20"	200 PSI	150 PSI	52 LBS	24"	11.90"	2"
14"	2615	L	13.00" – 14.25"	225 PSI	150 PSI	60 LBS	16"	12.00"	2" CENTER & 3/4" OFFSET
16"	2616	L	15.00" – 16.25"	225 PSI	150 PSI	70 LBS	16"	14.00"	2" CENTER & 3/4" OFFSET
16"-20"	2644	C	15.20" – 20.20"	200 PSI	150 PSI	92 LBS	24"	15.20"	2"
18"	2618	L	17.00" – 18.25"	225 PSI	150 PSI	90 LBS	16"	16.00"	2" CENTER & 3/4" OFFSET
20"	2619	L	19.00" – 20.25"	225 PSI	150 PSI	136 LBS	16"	18.00"	2" CENTER & 3/4" OFFSET
20"-26"	2645	C	19.20" – 26.20"	200 PSI	150 PSI	146 LBS	24"	19.20"	2"
21"	2607	L	20.00" – 21.25"	225 PSI	150 PSI	145 LBS	16"	19.00"	2" CENTER & 3/4" OFFSET
24"	2621	L	23.00" – 24.25"	225 PSI	150 PSI	195 LBS	16"	22.00"	2" CENTER & 3/4" OFFSET
26"-32"	2646	C	25.80" – 32.20"	200 PSI	150 PSI	371 LBS	24"	25.80"	2"
27"	2622	L	26.00" – 27.25"	225 PSI	150 PSI	215 LBS	16"	25.00"	2" CENTER & 3/4" OFFSET
30"	2623	L	29.00" – 30.25"	225 PSI	150 PSI	258 LBS	16"	28.00"	2" CENTER & 3/4" OFFSET
36"	2625	L	35.00" – 36.25"	225 PSI	150 PSI	355 LBS	16"	34.00"	2" CENTER & 3/4" OFFSET
42"	2627	L	41.00" – 42.25"	225 PSI	150 PSI	385 LBS	16"	40.00"	2" CENTER & 3/4" OFFSET
48"	2628	L	47.00" – 48.25"	225 PSI	150 PSI	465 LBS	16"	46.00"	2" CENTER & 3/4" OFFSET
54"	2629	L	53.00" – 54.25"	225 PSI	150 PSI	670 LBS	16"	52.00"	2" CENTER & 3/4" OFFSET
60"	2630	L	59.00" – 60.25"	225 PSI	150 PSI	850 LBS	16"	58.00"	2" CENTER & 3/4" OFFSET
66"	2631	L	65.00" – 66.25"	225 PSI	150 PSI	950 LBS	16"	64.00"	2" CENTER & 3/4" OFFSET
72"	2632	L	71.00" – 72.25"	225 PSI	150 PSI	1200 LBS	16"	70.00"	2" CENTER & 3/4" OFFSET
96"	2634	L	95.00" – 96.25"	225 PSI	150 PSI	1600 LBS	16"	94.00"	2" CENTER & 3/4" OFFSET



**STAY CLEAR OF THE DANGER ZONE  
BRACE/BLOCK PLUG BEFORE USE**

**REFER TO INCLUDED SAFETY INSTRUCTIONS FOR DETAIL**



**First Attempt (failed)**

The first attempt relied on that single short length of 6" x 6" wood at the center of the plug for the point of contact and the chains were not sufficiently tightened to prevent plug movement.

Note how the metal frame is extruding from the rubber and the rubber tears away from where it is vulcanized to the metal in the first attempt. This is now a damaged plug.



**Second Attempt (passed)**

For the second attempt the contractor increased quantity and length of 6" x 6" members to more than triple the points of contact and more securely block the plug in place. Take note that in the second attempt the metal frame is not extruding or pulling the rubber away because it is more secure, with sufficient tension, and the plug was not able to move whatsoever.



This document is a specification sheet and not meant to be used as a reference for pipe plug installation or safety procedures.

Refer to your plug safety and operating instructions or call Stemar directly if you have any questions or concerns.