



PLUGS – LONG TEST BALLS

SPECIFICATIONS

Stemar Long Test Balls are designed to be installed through a cleanout or floor drain and seal both sides of the wye for a sewer air test.

Molded sealing ribs at each end of the plug ensure a leak-free seal, and the top side of the plug will inflate before the bottom preventing possible backsplash during your waste stack test.



Stemar Long Test Balls, manufactured by Cherne Industries, are proudly made in the USA with 100% natural rubber.

LONG TEST BALLS

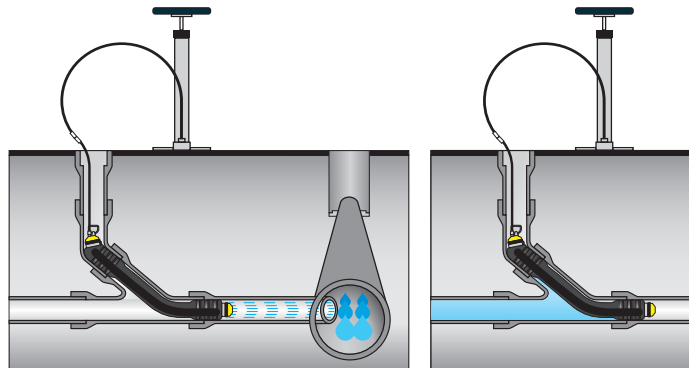
Plug Size	Stemar RC#	Usage Range (Pipe ID)	Inflation Pressure	Maximum Back/Test Pressure	Product Weight	Deflated Length	Deflated Diameter
3"	2410	2.75" – 3.25"	35 PSI	13 PSI / 30' HEAD	1.10 LBS	20.75"	2.31"
4"	2420	3.5" – 4.25"	30 PSI	13 PSI / 30' HEAD	2.31 LBS	24.75"	2.50"
4"-6"	2430	3.25" – 6.25"	45 PSI	13 PSI / 30' HEAD	4.00 LBS	28.50"	3.00"
6"-8"	2431	5.25" – 8.25"	30 PSI	15 PSI / 34' HEAD	10.00 LBS	31.00"	4.31"

ALWAYS BLOCK PLUGS WHEN CONDUCTING AIR OR WATER TESTS



Always read and understand how to safely use Pipe Plugs and testing equipment before attempting. Stemar provides safety instructions with every plug rental and additional copies can be downloaded from our website or requested by calling us at (800) 992-0100.

Long Test-Ball® plugs seals lateral during sewer air test



Plugs Top inflates first, deflates last; no backsplash