

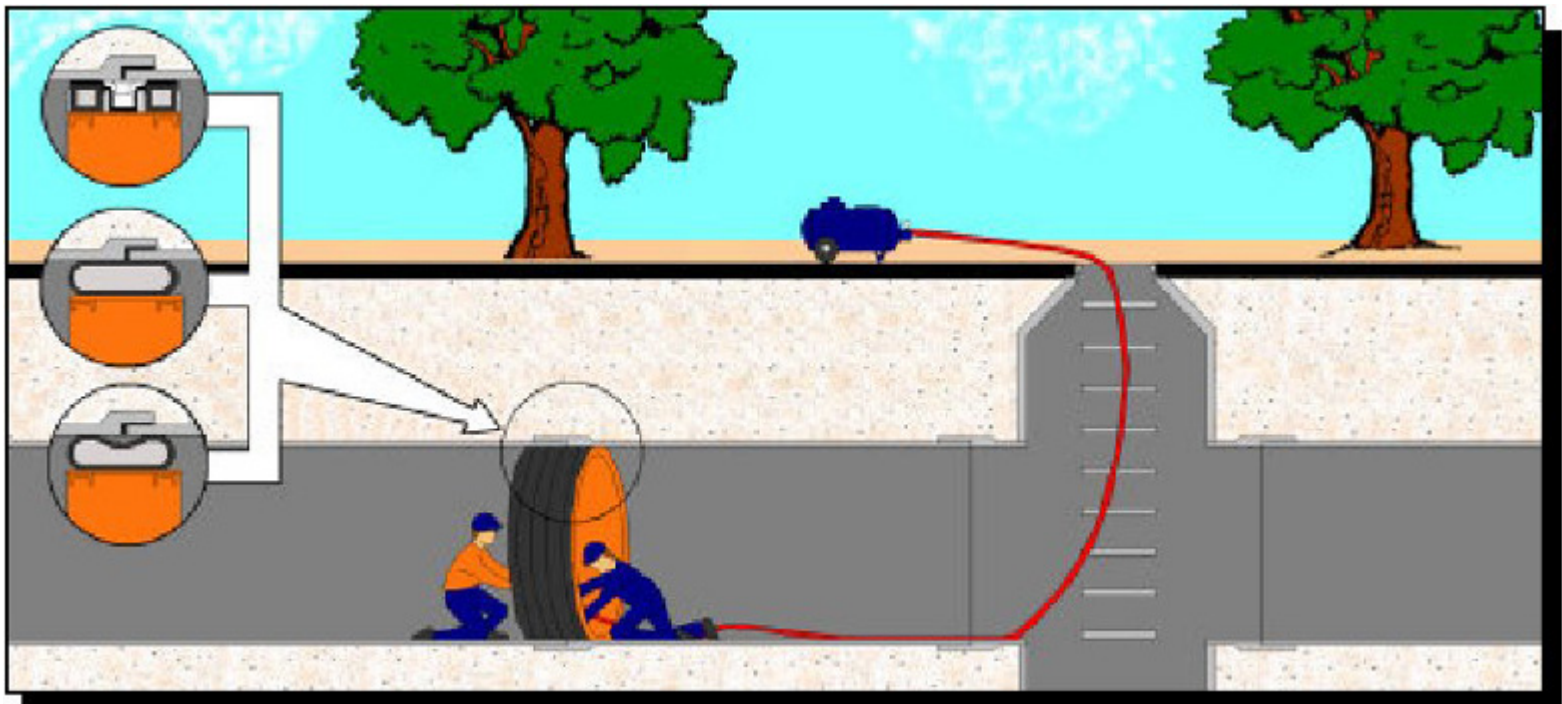
STEMAR EQUIPMENT & SUPPLY CO., INC.

Serving Underground Construction Since 1922

SINGLE-SIZE LOW & HIGH PRESSURE JOINT TESTERS

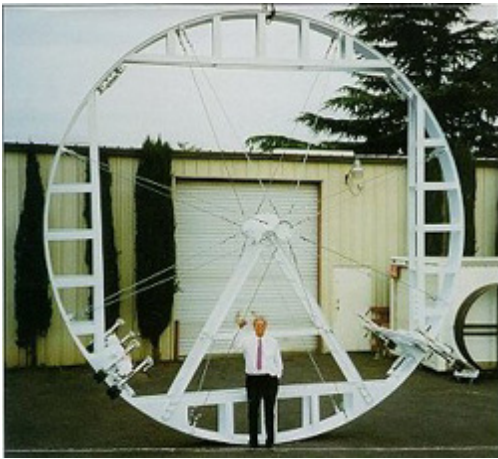
JOINT TESTERS are available for testing up to 100 PSI. They are designed to fit pipe sizes ranging from 24" - 120".

A test panel is included, it is designed to be used with air and/or water. There are no additional components that are needed. The joint testers can be used to test virtually any type of pipe material including concrete, ductile iron, polyethylene, PVC, steel, as well as concrete pipes with plastic liners.



Single-Size Low and High Pressure Joint Testers

20 PSI TEST PRESSURE			100 PSI TEST PRESSURE			SPECIFICATIONS		
PART#	MAXIMUM INFLATION PRESSURE	MAXIMUM TESTING PRESSURE		MAXIMUM INFLATION PRESSURE	MAXIMUM TESTING PRESSURE	FOR PIPE SIZE	MIN. PIPE DIA.	MAX. PIPE DIA.
432-24	60 PSI	20 PSI	434-24	160 PSI	100 PSI	24"	23.0"	24.25"
432-27	60 PSI	20 PSI	434-27	160 PSI	100 PSI	27"	26.0"	27.25"
432-30	60 PSI	20 PSI	434-30	160 PSI	100 PSI	30"	29.0"	30.25"
432-33	60 PSI	20 PSI	434-33	160 PSI	100 PSI	33"	32.0"	33.25"
432-36	60 PSI	20 PSI	434-36	160 PSI	100 PSI	36"	35.0"	36.25"
432-39	60 PSI	20 PSI	434-39	160 PSI	100 PSI	39"	38.0"	39.25"
432-42	60 PSI	20 PSI	434-42	160 PSI	100 PSI	42"	41.0"	42.25"
432-45	60 PSI	20 PSI	434-45	160 PSI	100 PSI	45"	44.0"	45.25"
432-48	60 PSI	20 PSI	434-48	160 PSI	100 PSI	48"	47.0"	48.25"
432-54	60 PSI	20 PSI	434-54	160 PSI	100 PSI	54"	53.0"	54.25"
432-60	60 PSI	20 PSI	434-60	160 PSI	100 PSI	60"	59.0"	60.25"
432-66	60 PSI	20 PSI	434-66	160 PSI	100 PSI	66"	65.0"	66.25"
432-72	60 PSI	20 PSI	434-72	160 PSI	100 PSI	72"	71.0"	72.25"
432-78	60 PSI	20 PSI	434-78	160 PSI	100 PSI	78"	77.0"	78.25"
432-84	60 PSI	20 PSI	434-84	160 PSI	100 PSI	84"	83.0"	84.25"
432-90	60 PSI	20 PSI	434-90	160 PSI	100 PSI	90"	89.0"	90.25"
432-96	60 PSI	20 PSI	434-96	160 PSI	100 PSI	96"	95.0"	96.25"
432-102	60 PSI	20 PSI	434-102	160 PSI	100 PSI	102"	101.0"	102.25"
CUSTOM	60 PSI	20 PSI	-	-	-	104"	104.0"	105.0"
432-108	60 PSI	20 PSI	434-108	160 PSI	100 PSI	108"	107.0"	108.25"
432-114	60 PSI	20 PSI	434-114	160 PSI	100 PSI	114"	113.0"	114.25"
432-120	60 PSI	20 PSI	434-120	160 PSI	100 PSI	120"	119.0"	120.25"



◀ This joint tester was designed and built for a water project near Phoenix, Arizona. Each joint of this 21' diameter pipeline was tested at 30 psi.

CAUTION:
Stay Clear While Testing



Custom Sizes and Higher Test Pressure Designs are Available.

-----MANUFACTURING AND WHOLESALE CONSTRUCTION EQUIPMENT-----

SALE • RENTAL • SERVICE

353 SOUTH CENTRAL AVENUE • LOS ANGELES, CA 90013-1784

(213) 625-0185 • (800) 992-0100 • 24 HR. FAX (213) 625-0826

www.stemarinc.com